

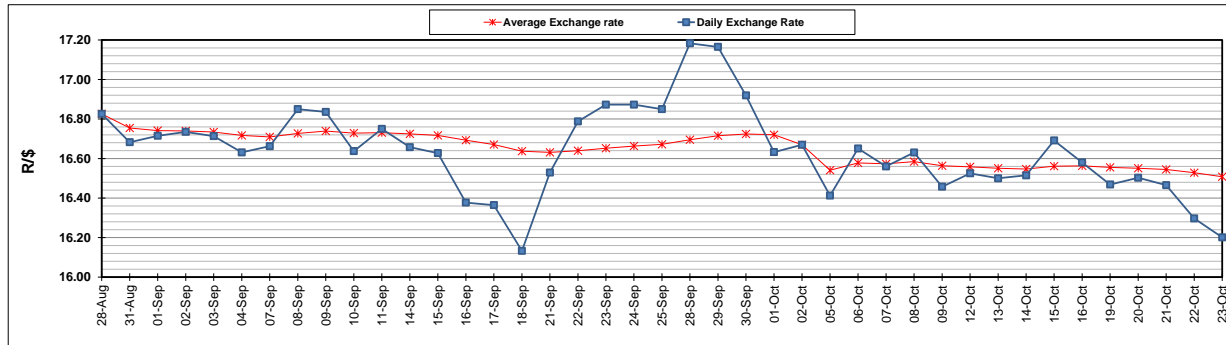
	PETROL 95 ULP	PETROL 93 ULP & LRP	DIESEL 0.05%	DIESEL 0.005%	ILL. PAR.
GAUTENG PUMP PRICE (SA c/l) AS FROM 07/10/2020	1,486.000	1,466.000	-	-	-
WHOLESALE PRICE (SA c/l) AS FROM 07/10/2020	-	-	1,237.560	1,238.960	640.828
SINGLE NATIONAL MAXIMUM RETAIL PRICE	-	-	-	-	798.000
BASIC FUEL PRICE - 23/10/2020 (SA c/l)	498.111	491.285	480.847	484.144	465.781
PRESS RELEASE CONTRIBUTION TO BFP 07/10/2020 - 23/10/2020 (SA c/l)	533.470	523.470	486.630	488.030	436.128
UNIT OVER/(UNDER) RECOVERY - 23/10/2020 (SA c/l)	35.359	32.185	5.783	3.886	(29.653)
AVERAGE BASIC FUEL PRICE 02/10/2020 - 23/10/2020	519.875	511.716	495.682	498.111	467.784
AVERAGE UNIT OVER/(UNDER) RECOVERY 02/10/2020 - 23/10/2020	19.595	16.067	7.823	7.357	(17.406)

ANALYSIS MOVEMENT OF AVERAGE OVER/(UNDER) RECOVERY

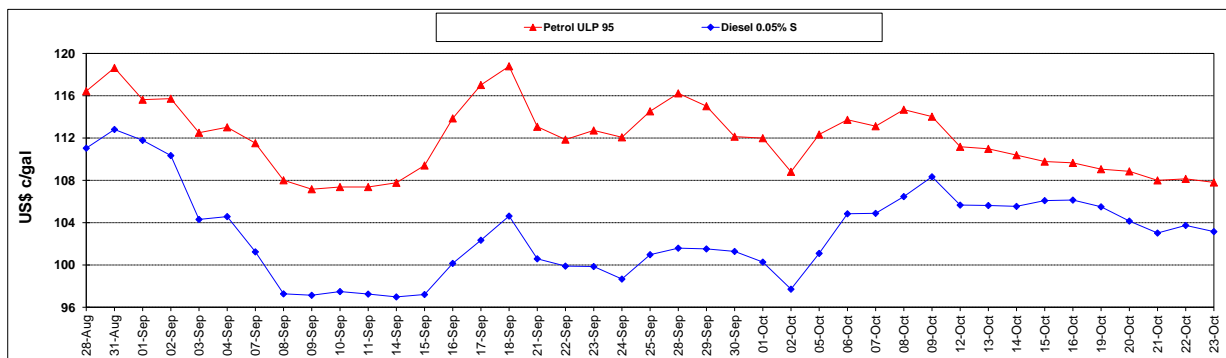
	PETROL 95	PETROL 93	DIESEL 0.05%	DIESEL 0.005%	ILL. PAR.
- MOVEMENT IN INTERNATIONAL PRODUCT PRICES	12.906	9.483	1.445	0.948	(23.425)
- MOVEMENT IN EXCHANGE RATE	6.689	6.584	6.378	6.409	6.019
AVERAGE UNIT OVER/(UNDER) RECOVERY 02/10/2020 - 23/10/2020	19.595	16.067	7.823	7.357	(17.406)

R/\$ EXCHANGE RATE - (R/\$16.2010 - 23/10/2020)

EXCHANGE RATE USED IN BASIC FUEL PRICE



INTERNATIONAL PRODUCT PRICES OF BASKET USED IN BASIC FUEL PRICE



BASIC FUEL PRICE IN SA CENTS PER LITRE

